

Stand Alone Dashboard

Stand Alone Dashboard Manual



*Document Code: **SAD***
Ver 1.0

2013-03-09

©Copyright Brultech Research Inc. 2013

TABLE OF CONTENTS

| | | |
|----------|---|----------|
| 1 | Introduction | 2 |
| 1.1 | Description | 2 |
| 1.2 | Options..... | 2 |
| 1.3 | Requirements..... | 3 |
| | Local Server Option | 3 |
| | Remote Server Option..... | 3 |
| | System Requirements | 4 |
| 2 | Install Dashboard-Lite | 4 |
| | Download xampplite..... | 4 |
| | Run the installation program..... | 4 |
| | Install xampplite to the root folder | 4 |
| | Select default prompts | 5 |
| 3 | Install Stand Alone Dashboard | 6 |
| 3.1 | Download “Stand Alone Dash” (Figure 8)..... | 6 |
| 3.2 | Extract Stand Alone Dash to the “\xampplite\htdocs” folder (Figure 9) | 6 |
| 3.3 | Click “Yes” to “overwrite index.php” (Figure 10)..... | 7 |
| 3.4 | Unblock Apache to the firewall when prompted (Figure 11)..... | 7 |
| 4 | Stand Alone Start-up | 8 |

Stand Alone Dashboard

1 INTRODUCTION

1.1 DESCRIPTION

The “Stand Alone Dashboard” (SAD) is a condensed version of the DashBox webserver. SAD needs to be installed on a webserver. The webserver may be local or remote. If it is to be installed on a local PC, This PC will require webserver software. Fortunately open source versions are free to download.

The SDS operates as a host, receiving data from the GreenEye Monitor or ECM-1240 energy monitor. As data is received from the energy monitor, the SDS stores this data to a database. The SDS also provides a web interface for charting and display of the real-time and historical data.

1.2 OPTIONS

There are two general options for running the SDS:

1. Run locally on a PC and local network (Figure 1)
2. Installed and running on a personal website account (Figure 2)

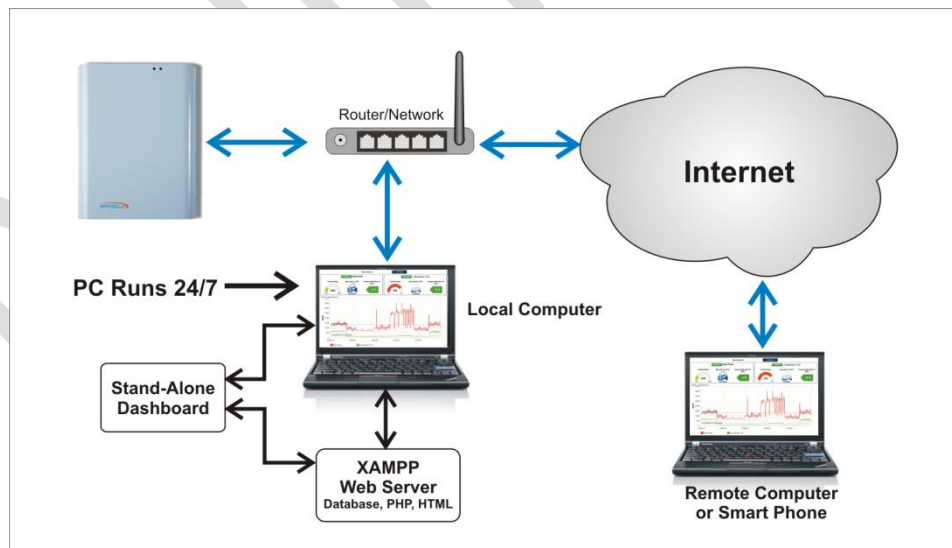


Figure 1

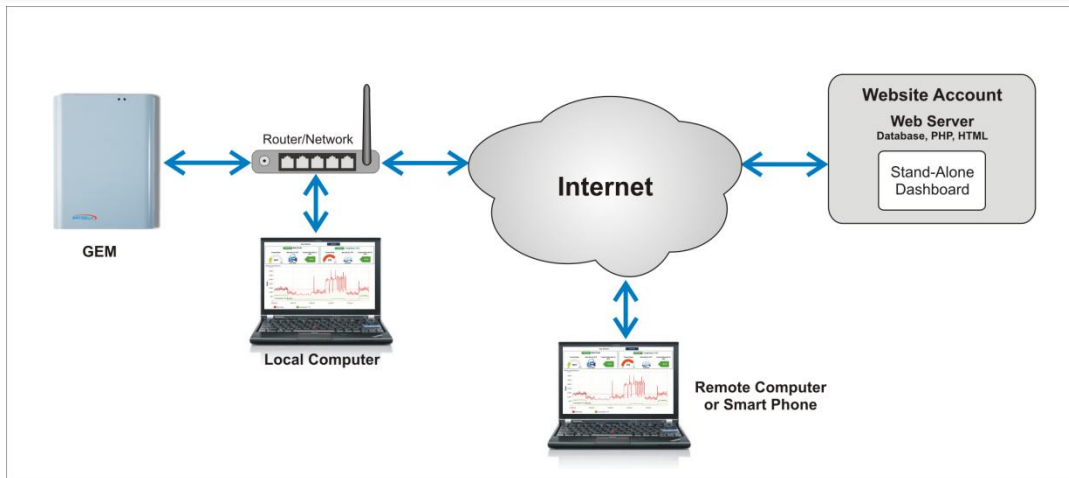


Figure 2

1.3 REQUIREMENTS

Local Server Option

The Stand Alone Dashboard runs on a webserver therefore if it is to run on a local PC, a “webserver” package will need to be installed on the PC. This PC will be required to run continuously (24/7), therefore it may be beneficial to consider a low power PC.

Fortunately, there are several open source webserver packages available which can run on Windows, Apple and Linux operating systems. Most of these are free and may be readily downloaded.

This example described in this manual makes use of a light version of “xampp” named “xampplite” for Windows. This compact version has all of the requirements to run SAD. Another popular server package is “wampp”. An internet search will provide various download links. The version used in this example was downloaded from:

http://download.cnet.com/XAMPP-Lite/3000-10248_4-75157363.html

The webserver requirements to run the SAD software are:

- Able to run PHP
- Must have “Postgres” database server

Remote Server Option

The SAD can run on a personal website account such as “bluehost.com”, “godaddy.com”, or others providing they offer the following:

- PHP server
- Postgres database server

Before subscribing to an account, the provider should be contacted first to verify that they will accept posts from the GEM every 10 seconds or so. We have experimented with free web accounts and found

that the frequent data posts caused the site to be blocked off. We have had no issues with low cost accounts however.

System Requirements

Data from the GEM or the ECM-1240 is transferred via a network therefore the energy monitor must have either Ethernet or Wifi (or both) module or adaptor.

2 INSTALL DASHBOARD-LITE

DOWNLOAD XAMPLITE from <http://download.cnet.com> (Figure 3)

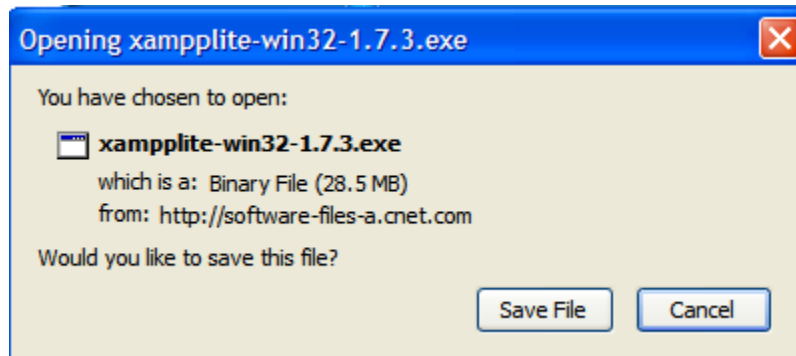


Figure 3

RUN THE INSTALLATION PROGRAM (Figure 4)

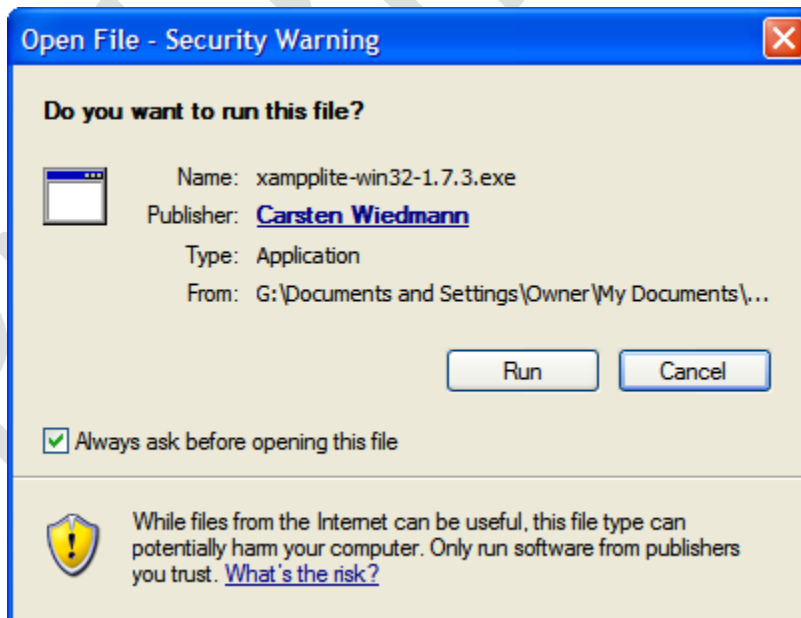


Figure 4

INSTALL XAMPLITE TO THE ROOT FOLDER (Figure 5)

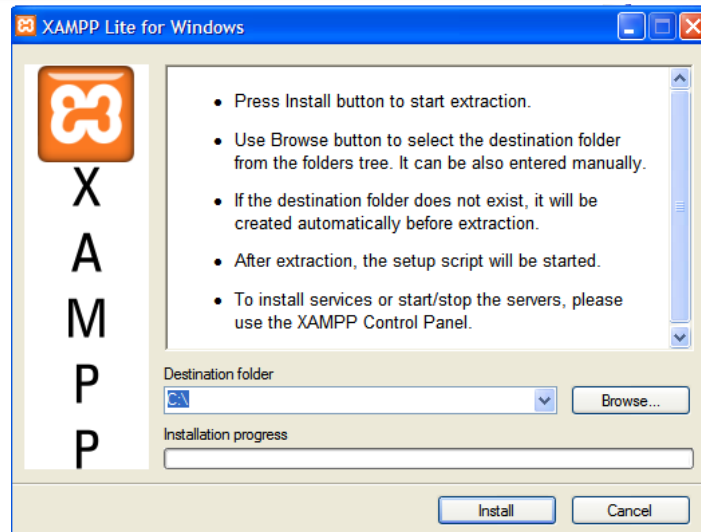


Figure 5

SELECT DEFAULT PROMPTS during installation (Figure 6 and Figure 7)

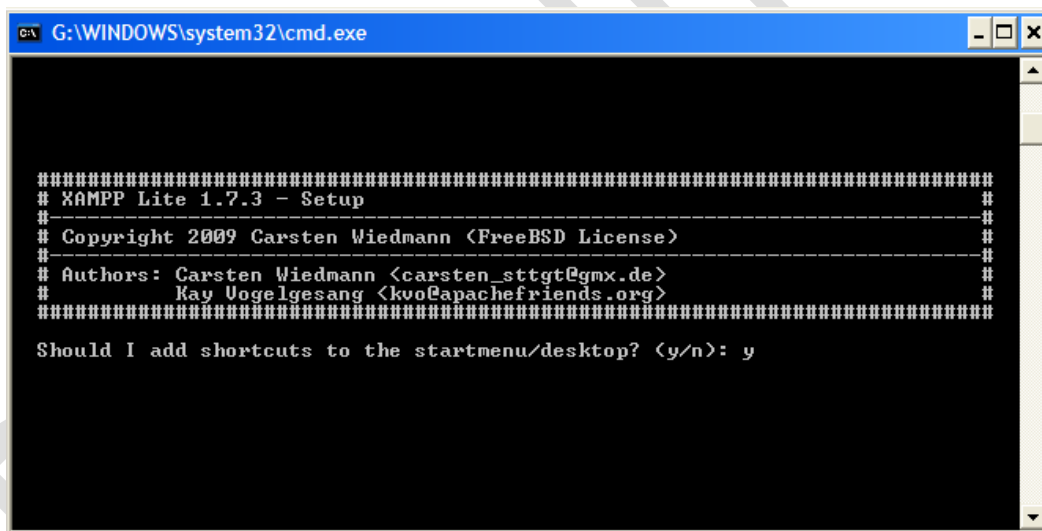


Figure 6

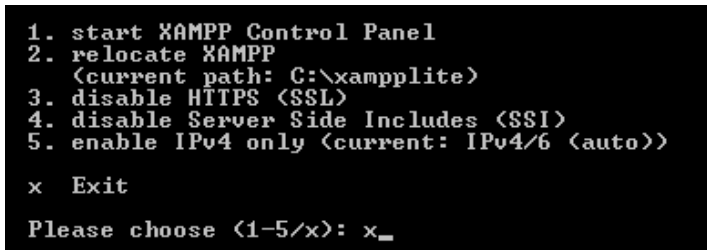


Figure 7

3 INSTALL STAND ALONE DASHBOARD

3.1 DOWNLOAD “STAND ALONE DASH” (FIGURE 8)

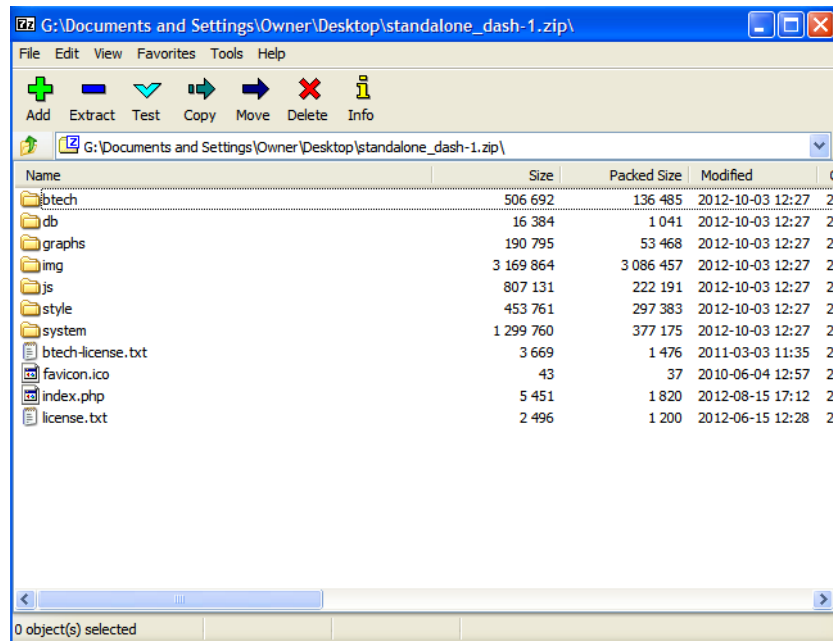


Figure 8

3.2 Extract Stand Alone Dash TO THE “\XAMPP\HTDOCS” FOLDER (FIGURE 9)

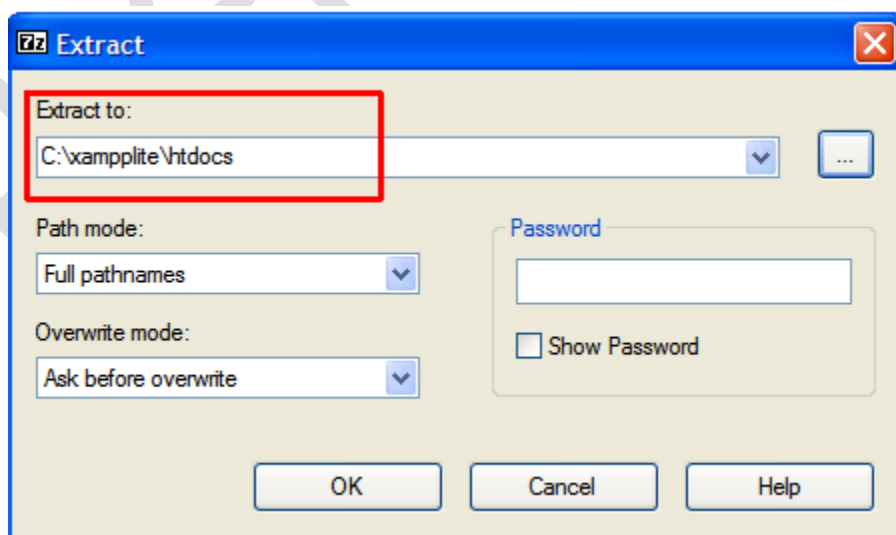


Figure 9

3.3 CLICK “YES” TO “OVERWRITE INDEX.PHP” (FIGURE 10)

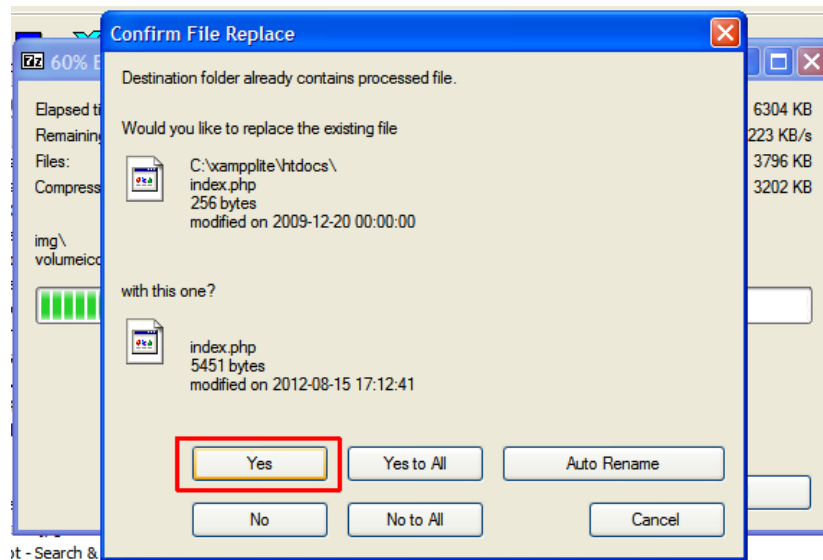


Figure 10

3.4 UNBLOCK APACHE TO THE FIREWALL WHEN PROMPTED (FIGURE 11)

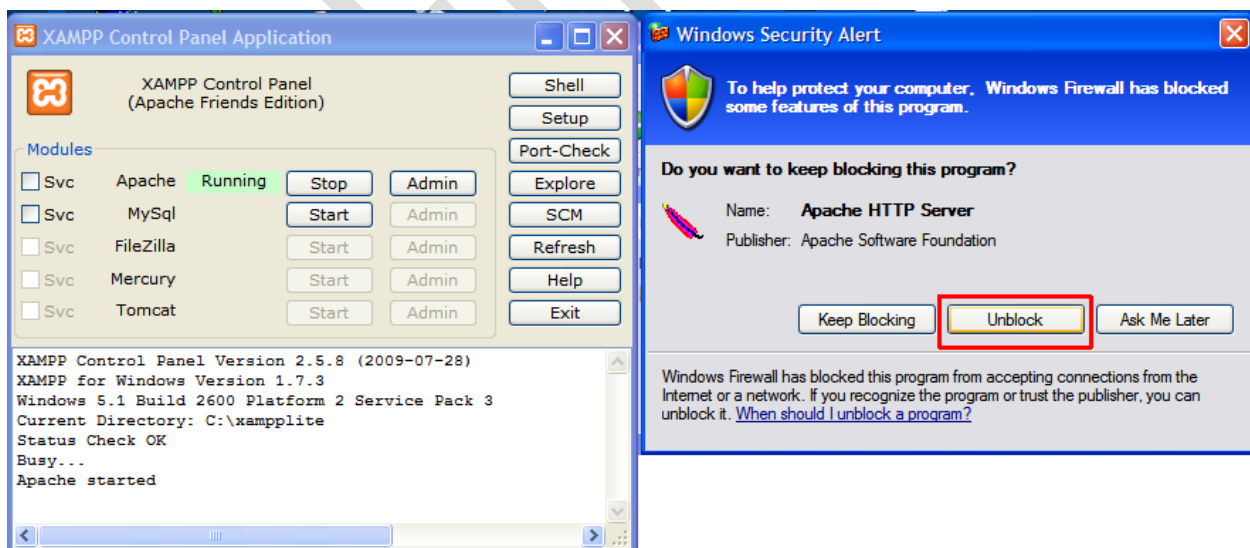
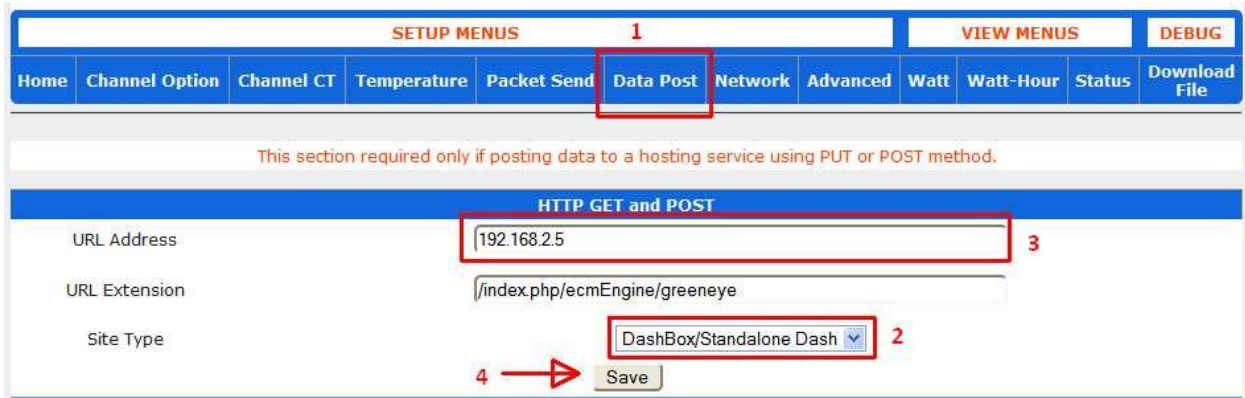


Figure 11

4 CONFIGURING THE GEM

Connect and enter into the GEM's Setup Web Interface.

Click "Data Post" from the menu.



SETUP MENUS 1 VIEW MENUS DEBUG

Home Channel Option Channel CT Temperature Packet Send Data Post Network Advanced Watt Watt-Hour Status Download File

This section required only if posting data to a hosting service using PUT or POST method.

HTTP GET and POST

URL Address 192.168.2.5 3

URL Extension /index.php/ecmEngine/greeneye

Site Type DashBox/Standalone Dash 2

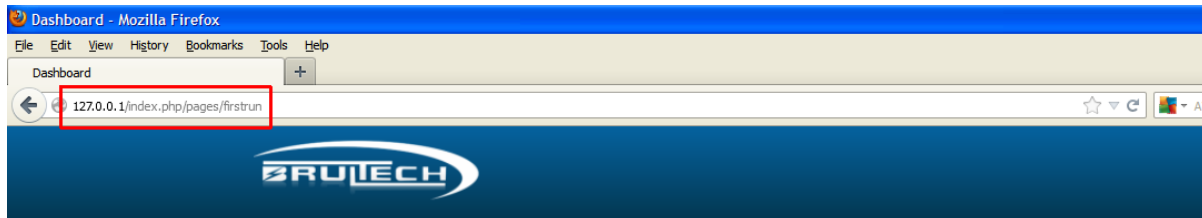
4 → Save

Figure 12

5 STAND ALONE START-UP

Open a browser and set address to “ <http://127.0.0.1> ” or “localhost”

Insert configuration information and click “Save Settings” (Figure 14)



On this page, you are asked to enter your time-zone and choose a user name and password for administration log-in. Once you've entered those values and submitted, they will be saved and you will be brought to your dashboard. From that point, scroll down to the bottom of the page and log-in using the user name and password you entered. After logging in, go to the Settings option in the top menu and you can start to configure your dashboard. In the settings menu you will find options for the following:

- Billing - Configure Flat Rate.
- Device - Add and configure your devices, add channel labels, define main channels, etc.
- Modules - Add and remove modules provided by BrulTech or by members of our community.
- Add-ons - Add-ons is a section that allows to configure extras.

After, start by configuring your Billing settings then Devices.

Initial Configuration

Timezone (GMT-05:00) Eastern Time (US & Canada)

Locale English (UnitedStates)

User Sample

Email brultech@gmail.com

Password

Confirm Pass

Save Settings

Figure 13



Figure 14

Login to the Dashboard as administrator via button

Enter user name and password (Figure 15)

Login

User Name: Sample

Password:

Login

[Forgot your password?](#)

Figure 15

Click “Settings”

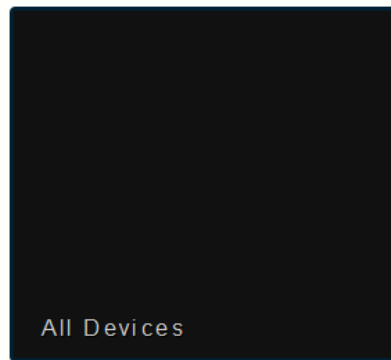
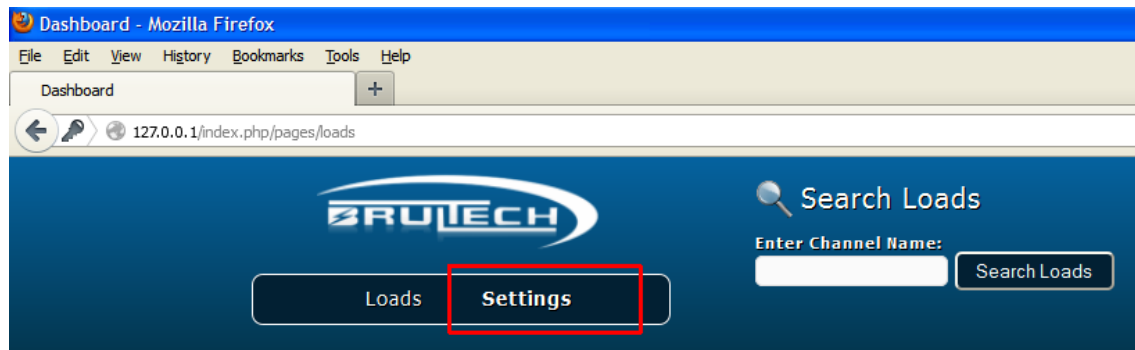


Figure 16

Click “Add new device”

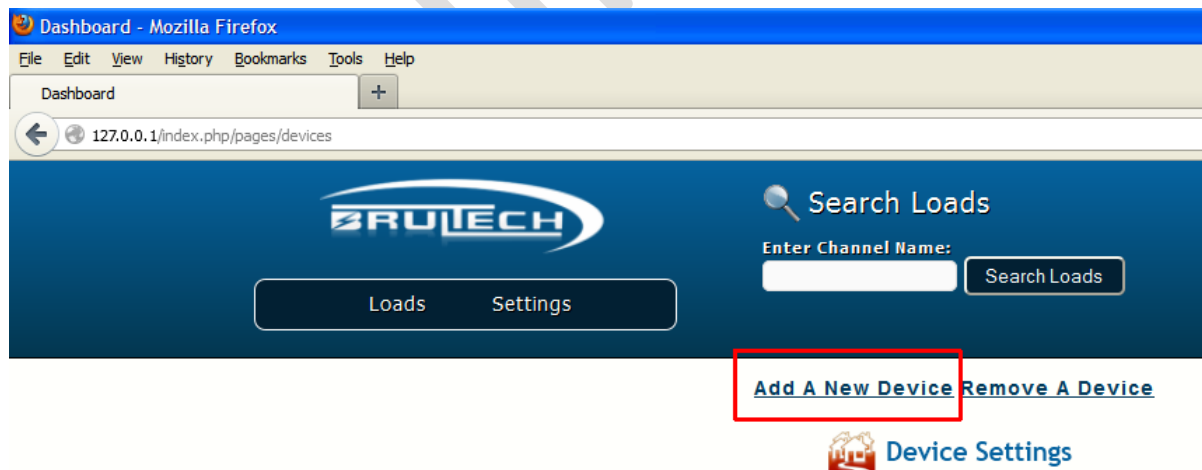
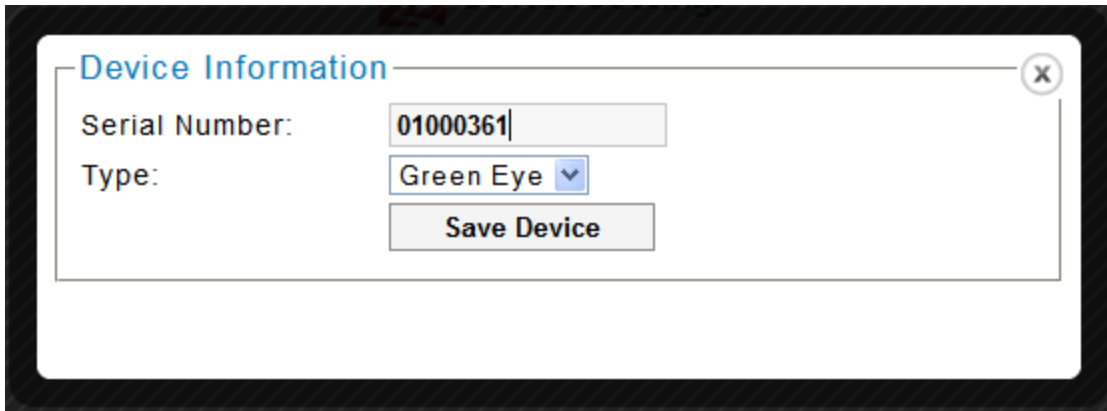


Figure 17

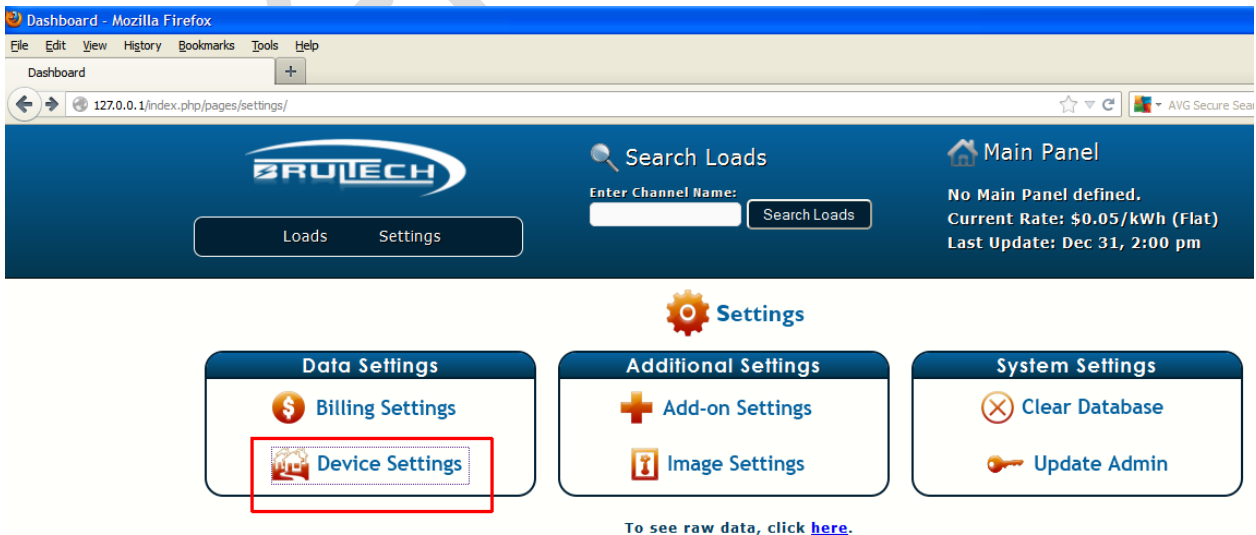
Select device then enter the device's serial number then click "Save"



A screenshot of a web form titled "Device Information" with a close button (X) in the top right corner. The form contains two input fields: "Serial Number:" with the value "01000361" entered, and "Type:" with a dropdown menu showing "Green Eye". Below these fields is a "Save Device" button.

Refer to Appendix A to setup the GEM or ECM-1240 monitor to post data

Once the monitor has been configured to post data, click "Device Settings"



A screenshot of a web dashboard in Mozilla Firefox. The browser address bar shows "127.0.0.1/index.php/pages/settings/". The dashboard header includes the BRUTECH logo, a "Search Loads" section with an "Enter Channel Name:" input and a "Search Loads" button, and a "Main Panel" section with the text "No Main Panel defined. Current Rate: \$0.05/kWh (Flat) Last Update: Dec 31, 2:00 pm". Below the header is a "Settings" section with a gear icon. It contains three columns of settings: "Data Settings" with "Billing Settings" and "Device Settings" (highlighted with a red box), "Additional Settings" with "Add-on Settings" and "Image Settings", and "System Settings" with "Clear Database" and "Update Admin". At the bottom, it says "To see raw data, click [here](#)."

Click the device's serial number

