

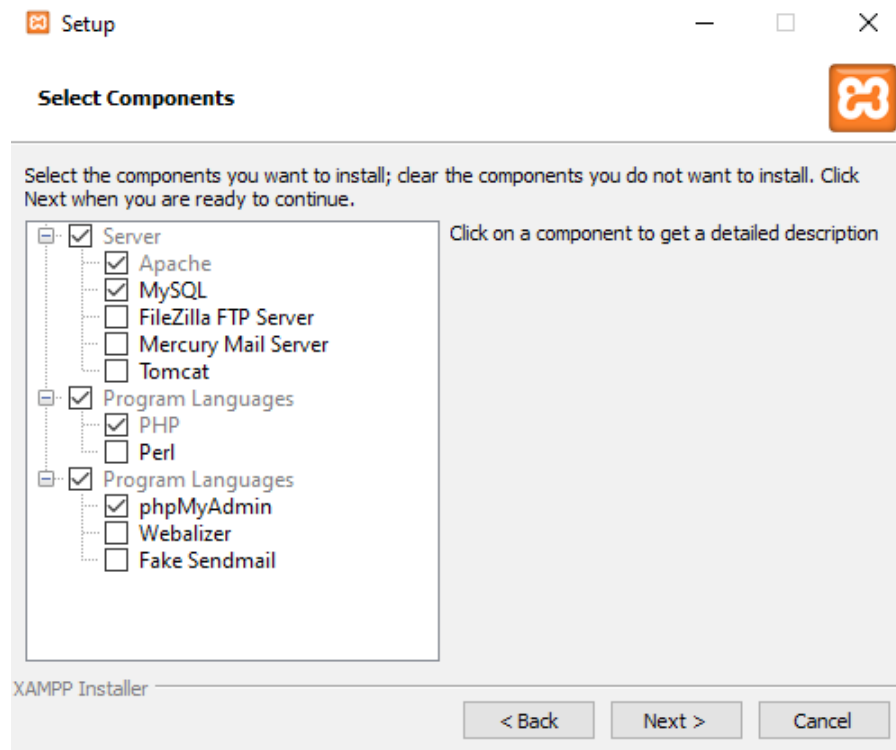
Standalone Dashboard Installation Instructions

Steps:

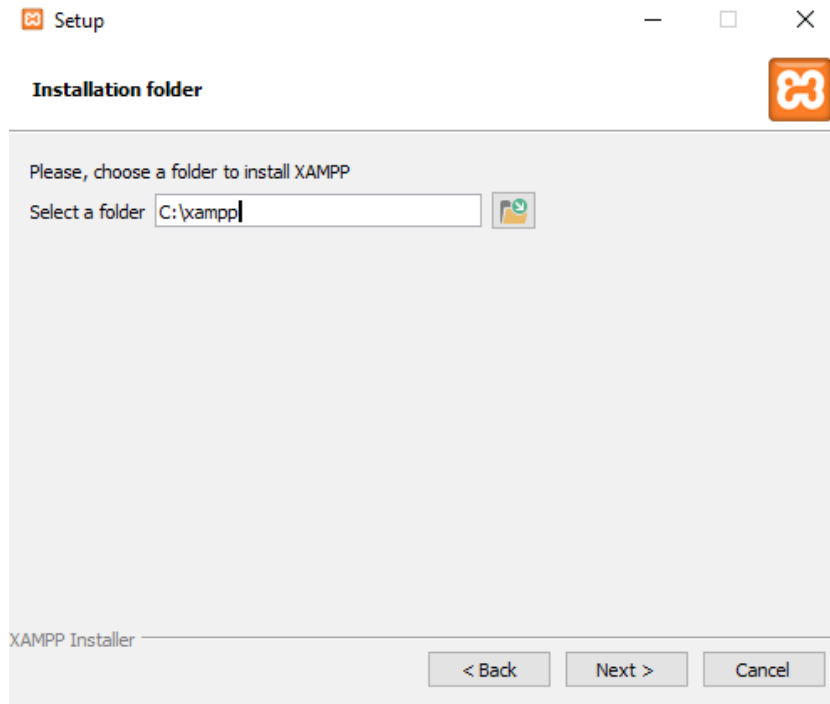
1. Installing XAMPP.
2. Starting XAMPP and Extracting the Dashboard.
3. Setting up the Database via MYSQL.
4. Configure Dashboard for Energy Monitor(s)
5. Configure Energy Monitor to send to Dashboard.

Step 1: Installing XAMPP

- Download XAMPP version 7.3 from: <https://www.apachefriends.org/download.html>
- Run the XAMPP installer, click Next.
- On the 2nd page uncheck checkboxes for optional components as the screenshots below and click Next.



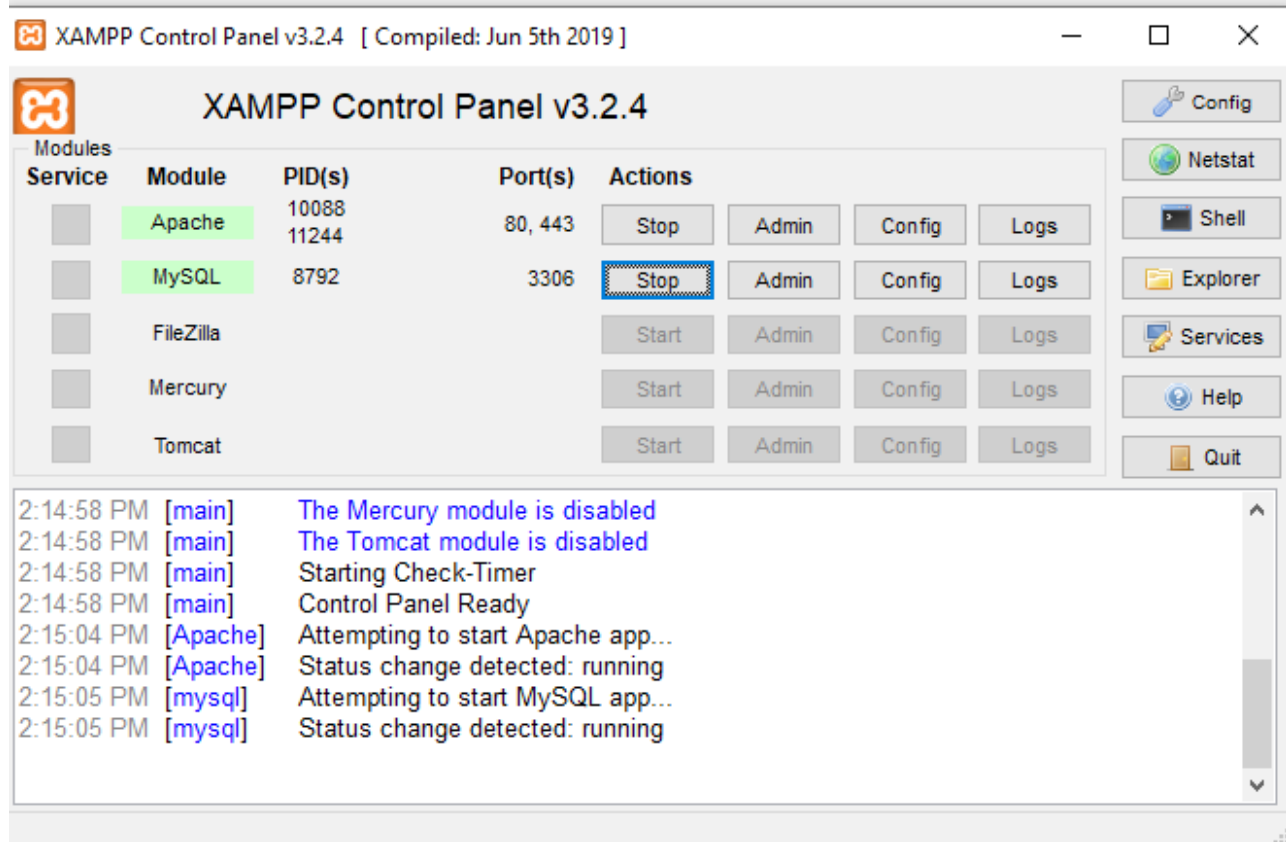
- Make note of your install folder below and click Next.



- Click Next until it's finished installing (uncheck the more information checkbox).

Starting XAMPP and Extracting the Dashboard

- The XAMPP config screen will open after the installer finishes. Click Start on MySQL and Apache.



- Download the Standalone Dashboard from:
<http://brultech.com/software/files/downloadSoft/PHP7CI3.zip>
- In File Explorer, go to the folder where you installed XAMPP. In that folder locate the “htdocs” folder.
- Open the zip file above and extract the contents to the htdocs folder.

Setting up the Database via MYSQL

- Open up a web browser.
- Go to <http://localhost/phpmyadmin/>
- Click Import from the menu.
- Click Choose File, locate the “htdocs” folder from above and select “dashboard-create-mysqldb.sql”
- Click “Go”, this should create a new database on the left called “dashboard”

Step 4: Configure Dashboard for Energy Monitor(s)

- Go to <http://localhost/>, on the initial configuration screen pick a timezone and create an administrative user. Save these settings.



EULA - End User License Agreement

This license agreement (hereinafter Agreement) is an agreement between you (the person or company who is being licensed to use the Software or Documentation) and Brutech (hereinafter We/us/our). The Agreement applies to all products/software/scripts/services you purchase or test from us.

1. By purchasing the Software you acknowledge that you have read this Agreement, and that you agree to the content of the Agreement and its terms, and agree to use the Software in compliance with this Agreement.

2. The Agreement comes into legal force at the moment when you order our Software from our site or receive it through email or on data medium at the our discretion.

3. We are the copyright holder of the Software. The Software or a portion of it is a copyrightable matter and is liable to protection by the law. Any activity that infringes terms of this Agreement violates copyright law and will be prosecuted according to the current law. We reserve the right to revoke the license of any user who is holding an invalid license.

4. This Agreement gives you the right to use only one copy of the Software on the DashBox solely for your own personal or business use, subject to all other terms of this Agreement. Any distribution of the Software without our consent, including noncommercial distribution is regarded as violation of this Agreement and entails liability, according to the current law.


5. You may not use any part of the code in whole or part in any other software or product or website.

6. You may not give, sell, distribute, sub-license, rent, lease or lend any portion of the Software or Documentation to anyone. You may not place the Software on a server so that it is accessible via a public network such as the Internet for distribution purposes.

Initial Configuration

| | |
|--|--|
| Timezone | (GMT-05:00) Eastern Time (US & Canada) ▼ |
| Locale | English (Canada) ▼ |
| User | admin |
| Password | |
| Confirm Pass | |
| I agree with License Agreement <input checked="" type="checkbox"/> | |
| <button>Save Settings</button> | |

- Click Settings in the top-menu.
- Click Connect a Monitor.



Usage Now

0 Watts

Billing Rate

Flat Rate

0.124

kWh Used Today

0 kWh ↑

Active Serials

0.000

Date: Jan 20th 2:42:01 PM

Loads

Settings

Search Loads

Energy Monitors

Options: Connect a Monitor Remove a Monitor

Virtual Monitors

Billing Rate

Forward Data ↓

Images

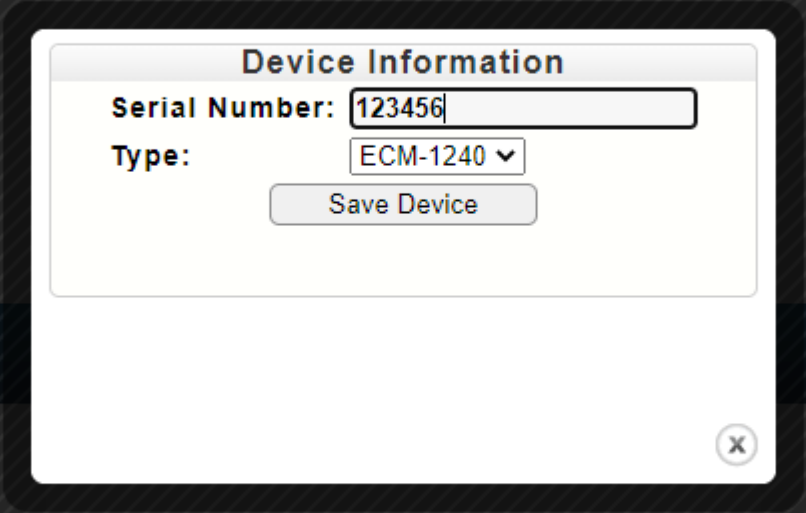
System ↓

Help

Logout

Copyright © Brutech Research Inc, 2016. Version 3.0

- Enter your Serial Number, choose your Device Type, and click Save.

A screenshot of a web application showing a 'Device Information' dialog box. The dialog box is white with a black border and a title bar. It contains two input fields: 'Serial Number' with the value '123456' and 'Type' with a dropdown menu showing 'ECM-1240'. Below these fields is a 'Save Device' button. The dialog box is set against a dark, textured background.

Device Information

Serial Number:

Type:

- Your energy monitor will appear on the Energy Monitors page. When it receives its first packet the “Click to Manage” area will fill with the monitors channels.

Step 5: Configure Energy Monitor for Dashboard (ECM-1240)

- This part assumes the Energy Monitor has been previously configured via the Interface Application software.
- Connect to the Energy Monitor via TCP Client or Server.
- Go to the ECM-1240 Setup tab.
- Click Read Settings.
- Choose HTTP Packet Format and click Accept.
- Click Set URL Info.
- Post Root URL will be the IP Address of your computer. Click Save.
- Post URL Extension will be “/index.php/ecmEngine/ecm1240” (without quotes). Click Save.
 - You can click Read on the above two settings to verify they’re right.

Network Module:

- If using an EtherPort or EtherBee open the EtherX software.
- Set Server IP to the IP Address of your computer and the Port beside Server IP to 80. Click Save Settings.